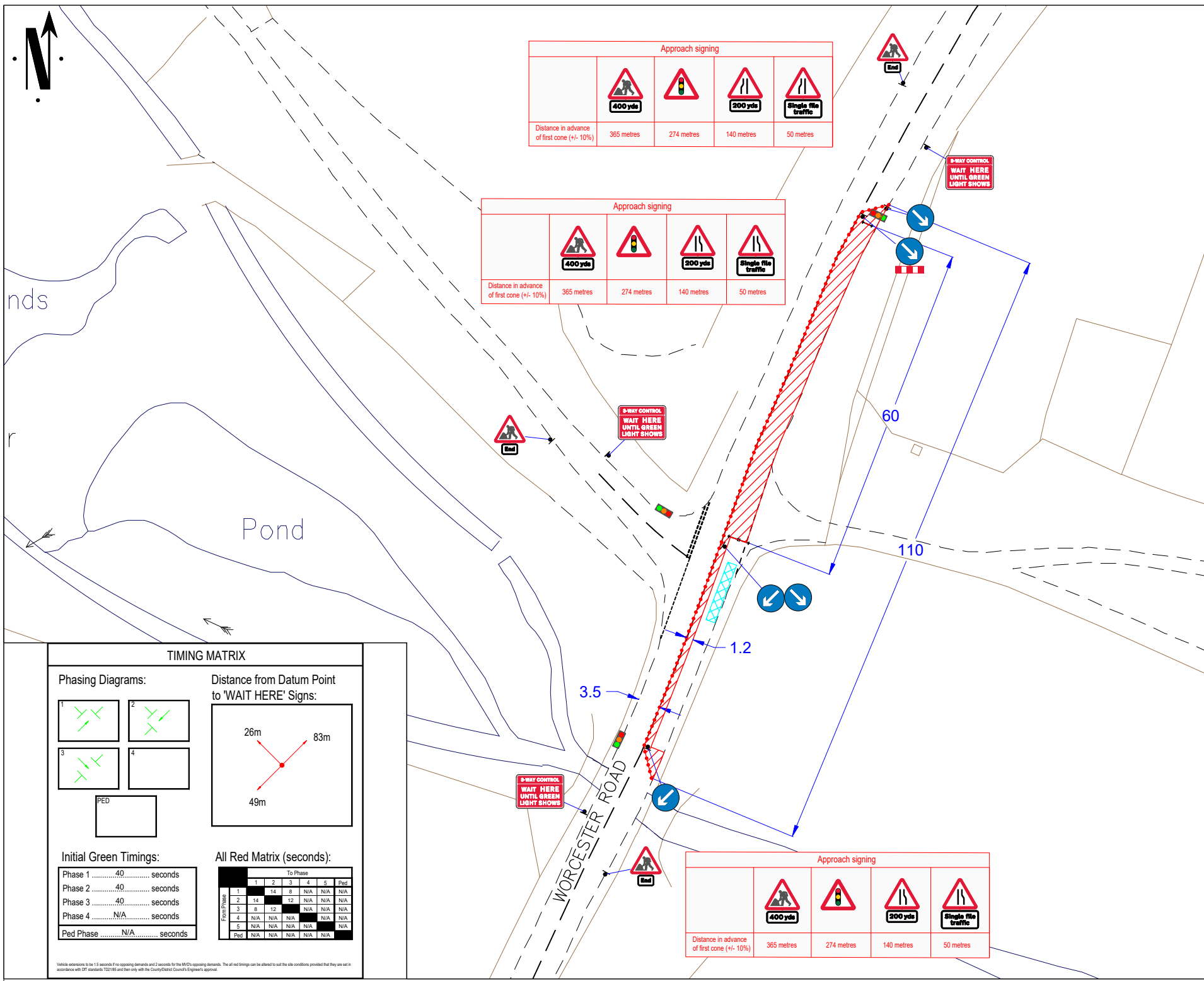




Approach signing				
Distance in advance of first cone (+/- 10%)	365 metres	274 metres	140 metres	50 metres

Approach signing			
Distance in advance of first cone (+/- 10%)	365 metres	274 metres	50 metres

Approach signing				
Distance in advance of first cone (+/- 10%)	365 metres	274 metres	140 metres	50 metres



Go Traffic Management

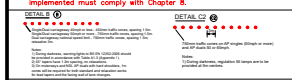
This drawing has been produced for a specific client & project identified below and is not intended for use by any other person or for any other purpose. © Go Traffic Management

Risks

- Design completed from information provided + google maps desktop risk assessment
- Cone lamps must be used on all road with a speed limit of 40mph or more.

Notes

- All signs as per Chapter 8. Distances between cones to be 9m maximum unless otherwise noted.
- Distances between signs NOT to scale for purpose of clarity.
- All sign placement subject to available safe working space.
- The purpose of the Traffic Management Plan is for it to be used only as a guide and all traffic management equipment should be put out according to the 'Safety at Street Works and Road Works - Code of Practice', i.e. Red Book & the 'Traffic Signs Manual Chapter 8', i.e. Yellow Book.
- Lane width past the works to be 3.5m maximum, 3.25m desirable minimum and 3.0m absolute minimum.
- Stop & Go boards must be available and utilised in the event of permanent signal failure in accordance with Code of Practice.
- Signs must be placed in accordance with TSM and the scheme RAMS pack.
- Site conditions may have changed since the design of the drawing any changes which subsequently affect the design need to be reported by the Traffic Management Operative & any changes implemented must comply with Chapter 8.



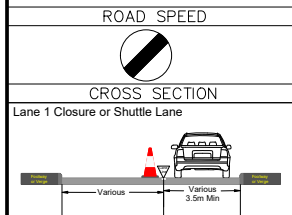
Key

	Sign position and aspect of vision		Working Space
	Position of signal head		Safety Zone
	Cone		Barriers

MINIMUM SIDEWAYS
1.2M LONGWAYS
SAFETY ZONE OF 60M
MUST BE ADHERED TO

WORK AREA GREATER/LESS THAN 0.5 MILES

Traffic Management must comply with the Safety at Street Works and Road Works Code of Practice



DO NOT SCALE FROM THIS DRAWING

3 Way Traffic Signals

REV.	DATE	DESCRIPTION
A	12/03/26	AS DRAWN

GTM
Go Traffic Management

Head Office: Go Traffic Management, Chaddock Lane, Worsley, Manchester, M28 1XW
Tel: 0161 351 5370
www.gtm.co.uk

TRAFFIC MANAGEMENT PLAN

Client: **SEVERN TRENT WATER**

Drawing Number: 1713349.0001

Drawing Title: Worcester Road, Kidderminster, DY10 4NQ

Name:	Design:	Technical Officer:	REV:
	D.Smith	M.Gardiner	
Signature:			A
Date:	12/03/26	12/03/26	

TIMING MATRIX

Phasing Diagrams:

Distance from Datum Point to 'WAIT HERE' Signs:

Initial Green Timings:

Phase 1	40	seconds
Phase 2	40	seconds
Phase 3	40	seconds
Phase 4	N/A	seconds
Ped Phase	N/A	seconds

All Red Matrix (seconds):

From Phase	To Phase	1	2	3	4	5	Ped
1	1	2	3	4	5	N/A	N/A
2	14	14	8	N/A	N/A	N/A	N/A
3	8	12	N/A	N/A	N/A	N/A	N/A
4	N/A	N/A	N/A	N/A	N/A	N/A	N/A
5	N/A	N/A	N/A	N/A	N/A	N/A	N/A
Ped	N/A	N/A	N/A	N/A	N/A	N/A	N/A

Vehicle operations to be 1.5 seconds free opposing demands and 2 seconds for the MFD's opposing demands. The all red timings can be altered to suit the site conditions provided that they are set in accordance with DTG standards T22186 and free only with the County Council's Council's Engineer's approval.