



RTPI

mediation of space · making of place

Chaddesley Corbett

NDP Review

Habitats Regulations Assessment

Screening Assessment

Kirkwells

The Planning People

1. Introduction

- 1.1 Kirkwells Planning Consultants has prepared this screening report on behalf of Chaddesley Corbett Parish Council to support the Parish Council in determining whether or not the contents of the Chaddesley Corbett Neighbourhood Plan Review are likely to require a Habitats Regulation Assessment (HRA).
- 1.2 Habitats and species of European nature conservation importance are protected by the European Directive (92/43/EEC) on the Conservation of Natural Habitats and Wild Flora and Fauna (The Habitats Directive)¹. The Habitats Directive establishes a network of internationally important sites designated for their ecological value. These sites are often referred to as Natura 2000 sites or European sites and comprise Special Areas of Conservation (SACs), Special Protection Areas (SPAs) and Ramsar sites. This is translated into UK law via the Conservation of Habitats and Species Regulations 2010.
- 1.3 Under Article 6 of the Habitats Directive (and Regulation 61 of the Habitats Regulations), an assessment is required where a plan or project may give rise to significant effects upon a European site.
- 1.4 The overarching aim of HRA is to determine, in view of a site's conservation objectives and qualifying interests, whether a plan or project, either in isolation and/or in combination with other plans would have a significant adverse effect on a European site. If the screening concludes that a significant adverse effect is likely, then Appropriate Assessment must be undertaken to determine whether there will be adverse effects on site integrity.
- 1.5 There are two European sites within approximately 13 - 20 km radius of the neighbourhood area boundary and proposed housing sites which could potentially be affected by the Chaddesley Corbett Draft Neighbourhood Plan Review. Further information on these designations is provided below.

2. HRA process

- 2.1 The requirements of the Habitats Directive comprise four distinct stages:

Stage 1: Screening.

This is the stage which initially identifies the likely impacts upon a European site of a project or plan, either alone or in-combination with other projects or plans, and considers whether these impacts may have a significant effect on the integrity of the site's qualifying habitats and/or species. Where a significant effect is identified the assessment moves onto stage 2.

Stage 2: Appropriate Assessment.

This provides the detailed consideration of the impact on the integrity of the European site of the project or plan, either alone or in combination with other projects or plans, with respect to the site's conservation objectives and its structure and

¹ The UK has left the European Union and equivalent legislative provisions have been written into UK law.

function. This is to determine whether or not there will be adverse effects on the integrity of the site. This stage also includes the development of mitigation measures to avoid or reduce any potential impacts.

Stage 3: Assessment of alternative solutions.

This examines alternative ways of achieving the objectives of the plan or project that would avoid adverse impacts on the integrity of the European site, should avoidance or mitigation measures be unable to cancel out adverse effects.

Stage 4: Assessment where no alternative solutions exist and where adverse impacts remain.

In such circumstances it must be demonstrated that the development is necessary for imperative reasons of overriding public interest.

3. Background

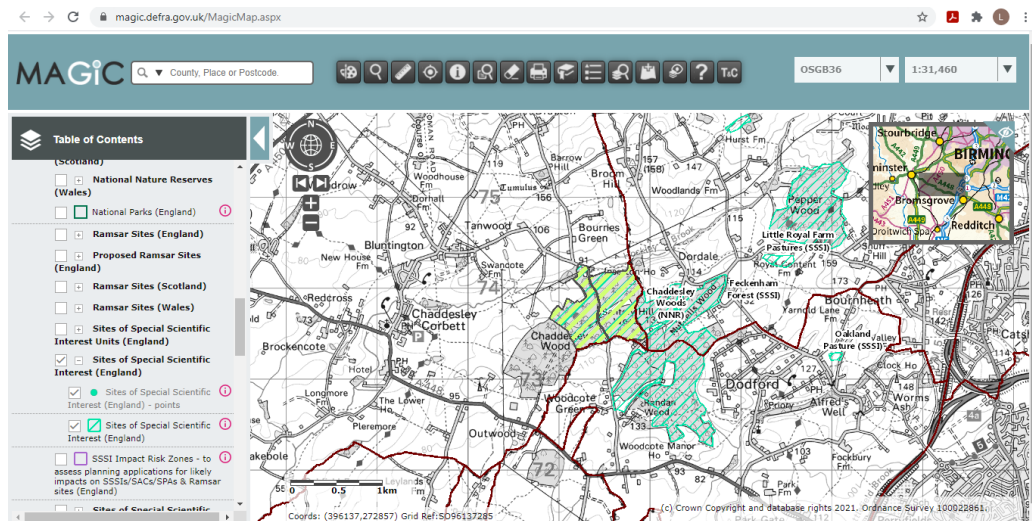
- 3.1 Neighbourhood Planning gives local communities the opportunity to prepare planning documents for their area, enabling them to shape the future of where they live and giving them greater ownership of the plans and policies that affect them. Introduced under the Localism Act in 2011 Neighbourhood Plans provide a new tier of planning policy.
- 3.2 The Development Plan is the strategic framework that guides land use planning for the area. This currently consists of the Wyre Forest District Local Plan (2016-2036), Chaddesley Corbett Neighbourhood Plan (September 2014) and Churchill and Blakedown Neighbourhood Plan (July 2017).
- 3.3 Wyre Forest District Council Habitat Regulations Assessment Screening Report for the Wyre Forest District Local Plan Review February 2018 provided the Habitat Regulation Assessment screening report for the Local Plan Review and was used to inform the Chaddesley Corbett NDP Review Screening Assessment. The Wyre Forest District Local Plan (2016-2036) was formally adopted by Wyre Forest District Council on 26th April 2022. The HRA Screening Assessment has been updated prior to submission of the Review Plan.
- 3.4 The Neighbourhood Plan area for Chaddesley Corbett was formally designated on 14th September 2012. This confirmed the Parish Council's commitment to preparing a Neighbourhood Plan and identified the proposed Neighbourhood Plan area.
- 3.5 Chaddesley Corbett Parish Council has updated the made NDP and prepared an emerging Draft Modified Plan. The NDP Review v14 September 2021 formed the basis of the first Screening Assessment. The Draft Plan included some minor text changes to take account of the published Main Modifications to the new Local Plan but the NDP policies and proposals remained largely unchanged.
- 3.6 The Chaddesley Corbett Draft Modified Neighbourhood Development Plan (NDP) was published for formal consultation (Regulation 14) from Tuesday 1st March 2022 until Friday 22nd April 2022, a period of just over 7 weeks. The consultation responses led to a couple of very minor changes to the wording of 2 planning policies and some updating and revision of the supporting text.

- 3.7 The Review NDP has been prepared to be in general conformity with the new adopted Local Plan. The changes to the Draft Modified Plan are not considered to be so significant as to impact on the earlier screening outcomes.

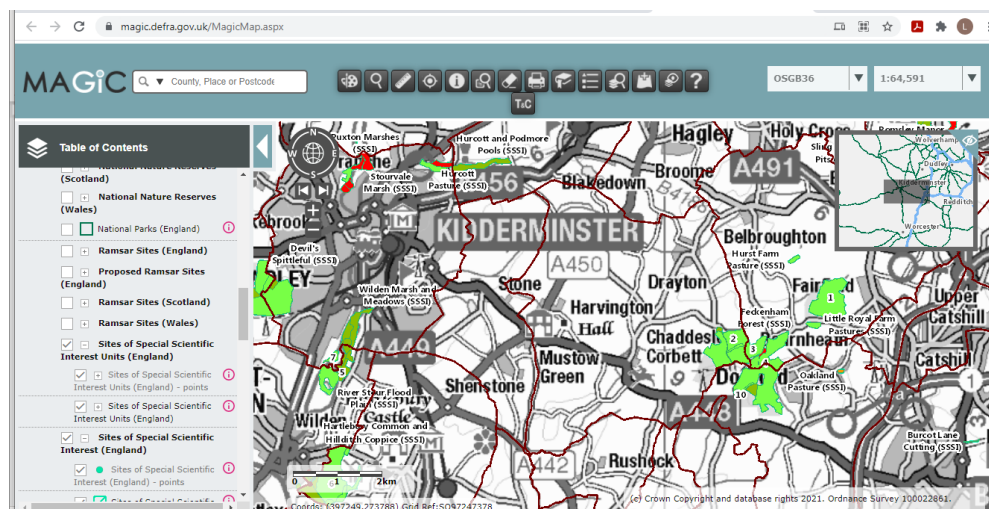
4. Relevant European Sites (and SSSIs)

- 4.1 There are no European Sites within the boundary of the plan area although the Plan area includes part of a UK designated site, Chaddesley Wood, which is a National Nature Reserve and SSSI - see Figure 1 Screenshot from MAGIC. There are also several SSSIs just outside the NDP area including Feckenham Forest, Oakland Pasture, Little Royd farm Pastures, Hurst Farm Pasture, Wilden Marsh and Meadows and Hucott and Podmore Pools - see Figure 2 Screenshot from MAGIC.

**Figure 1: Screenshot from MAGIC
UK Designated Sites within NDP Area Boundary**



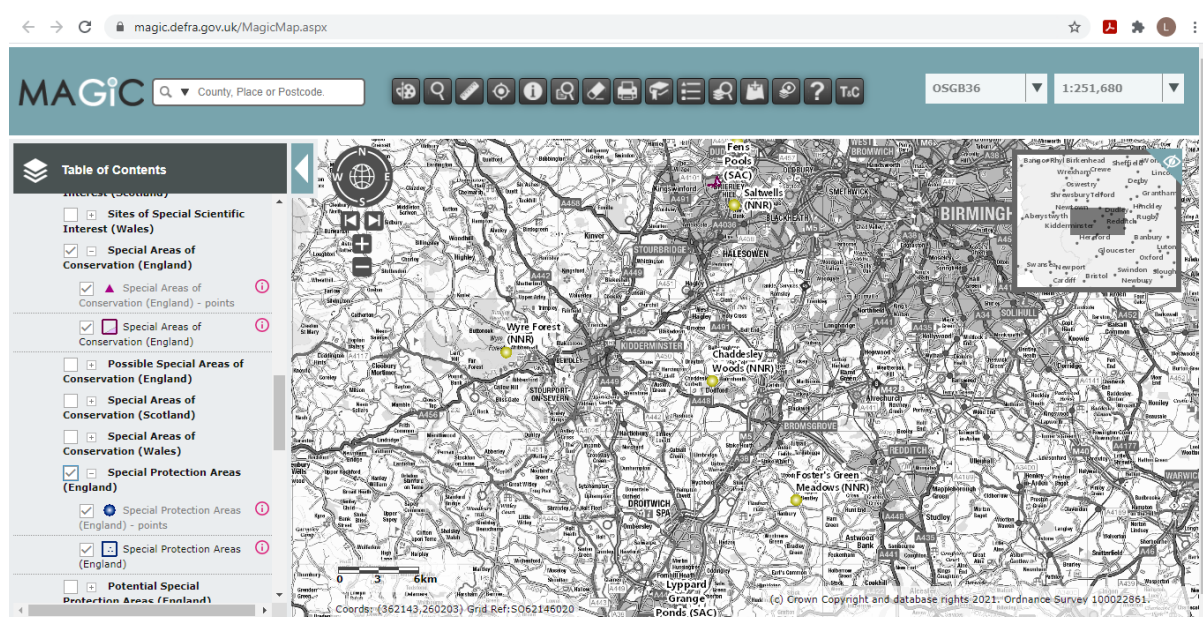
**Figure 2: Screenshot from MAGIC
UK Designated Sites just outside the NDP Area Boundary**



(Source: <https://magic.defra.gov.uk/MagicMap.aspx>)

- 4.2 Government guidance states that significant effects may be incurred even in cases where the area of the plan is some distance away. As a precautionary measure, this screening report has assessed to see if there are any European sites 15km (straight line) of the neighbourhood area boundary and proposed housing site allocations. There are 2 European designated sites that could potentially be affected by the Chaddesley Corbett Neighbourhood Plan Review.
- 4.3 Fens Pools SAC lies approximately 12 km to the north of the Parish and Lyppard Grange Ponds lies approximately 15 km to the south - see Figure 3 screenshot of MAGIC map below. No SPA or Ramsar sites have been identified either within the District or within 15km of the NDP area boundary.

**Figure 2: Screenshot from MAGIC
European Designated Sites within approximately 15km of NDP Area Boundary**



**Table 1: Summary of European Sites
Special Areas of Conservation**

Site Name	Natural England's Code	Distance from the Neighbourhood Plan Boundary (km)	Distance from Proposed Site allocations
Fens Pools SAC	UK0030150	12km (approx.)	Site H2/1 Land off Bromsgrove Road, Lower Chaddesley: 15.28km Site H2/2 The Old Quarry, Mustow Green: 14.84km Site H2/3 Hewitts Site, Stourbridge Road, Harvington: 13.76km
Lyppard Grange Ponds SAC	UK0030198	15 km (approx.)	Site H2/1 Land off Bromsgrove Road, Lower Chaddesley: 17.00km

			<p>Site H2/2 The Old Quarry, Mustow Green: 18.58km</p> <p>Site H2/3 Hewitts Site, Stourbridge Road, Harvington: 19.48km</p>
--	--	--	---

The Characteristics of the European Sites identified

- 4.4 The following provides a summary of the European sites that have been identified outside of the Neighbourhood Area but within a 15km approx. distance of the Neighbourhood Area:
- Fens Pools SAC – The site comprises of a series of small pools and a wide range of other habitats from swamp, fen and inundation communities to unimproved neutral and acidic grassland and scrub. Great crested newts *Triturus cristatus* occur as part of an important amphibian assemblage. The site, which shows evidence of post industrial activities, overlies Etruria marls and coal measures of the Carboniferous period;
 - Lyppard Grange Ponds SAC – This site can be found behind the community shopping area in Warndon Villages in the City of Worcester. The area serves as public open space within recently constructed housing and other built development. The SAC includes two field ponds located in the grounds of the former Lyppard Grange Farm. These two ponds, along with the surrounding terrestrial habitats, support a large breeding colony of great crested newts. The terrestrial habitat within these grounds now comprises rough grassland with brambles and scrub, and retains many mature native and exotic trees. Despite its small size, the site is very important for local wildlife as part of a network of nature conservation areas throughout the Villages and forms part of a Local Nature Reserve.
- 4.5 The conservation objectives for the designations are provided in Appendix 2.
- 4.6 The Draft Neighbourhood Plan Review document has been screened for likely significant effects on the 2 European sites. This information has been obtained from Natural England's website and also informed by the wider Local Plan HRA assessment.

The main impact pathways could be:

- Physical loss of habitat/damage to habitat
 - Non-physical disturbance
 - Recreational pressure
 - Contamination
 - Biological disturbance
 - Loss of functionally linked land
 - Changes in water quality
- 4.7 Table 2 below provides an assessment of the likely significant effects the NDP Review might have on the identified European sites.

Table 2: Assessment of Likely Significant Effects

Site	Environmental conditions to support site integrity	Possible impacts arising from NDP Review	Is there a risk of a significant effect?	Possible impacts from other, trends plans, etc.	Is there a risk of significant 'in combination'
Fens Pools SAC	Great Crested Newt has been identified at the site.	None. The site is located outside of the Neighbourhood Area boundary and District boundary and proposed housing site allocations. No effects envisaged.	No effects envisaged.	None	No
	The site shows evidence of past industrial activity and includes a range of habitats from open water, swamp, and inundation communities to unimproved natural and acidic grassland and scrub.	None. The site is located outside of the Neighbourhood Area boundary and District boundary and proposed housing allocations. No effects envisaged.	No effects envisaged.	None	No
Lyppard Grange Ponds SAC	Great Crested Newt has been identified at the site. The ponds are associated with good quality terrestrial habitats	None. The site is located outside of the of the Neighbourhood Area boundary and District. No effects envisaged.	No effects envisaged.	None	No
	The ponds are associated with good quality terrestrial habitats	None. The site is located outside of the of the Neighbourhood Area boundary and District. No	No effects envisaged.	None	No

Site	Environmental conditions to support site integrity	Possible impacts arising from NDP Review	Is there a risk of a significant effect?	Possible impacts from other, trends plans, etc.	Is there a risk of significant 'in combination'
		effects envisaged.			

5. Development needs in Wyre Forest District and Neighbouring Local Authority Areas and Assessment of In Combination Effects

- 5.1 The Table in Section 7 (p8) of the Wyre Forest District Council Habitat Regulations Assessment Screening Report for the Wyre Forest District Local Plan Review February 2018 (Development Needs in Wyre Forest District and Neighbouring Local Authority Areas) summarises the development needs in Wyre Forest District and neighbouring Local Authority areas that could also lead to 'in combination' impacts with Wyre Forest District emerging Local Plan.
- 5.2 The Habitats Directive requires Local Authorities to assess 'in-combination' effects alongside direct effects. 'In-combination' effects occur when otherwise non-significant proposals combine, and can cumulatively lead to a significant effect. This interaction can occur from proposals within the Development Plan or between the Development Plan and other projects and plans. The table in Appendix 3 of the Screening Report for the Wyre Forest District Local Plan Review February 2018 details the other projects and plans identified which may lead to in combination effects on the European sites.
- 5.3 As the NDP Review has to be in general conformity with the Local Plan these assessments are relevant to the NDP Review.

6.0 Conclusions

- 6.1 There are two European sites (Natura 2000) within approximately 15km of the Chaddesley Corbett Neighbourhood Area boundary and approximately 13 - 20km of the proposed housing site allocations. The conclusions of these two sites are set out below:

Fens Pools SAC

- 6.2 It is considered unlikely that the Draft NDP Review could have a significant effect on the Fens Pools SAC either alone or in combination. Plans in Wyre Forest will have no effect on human disturbance on this site which is already surrounded by development and easily accessed. The Draft NDP Review policies and proposals are unlikely to have any effect on protected species at or around this European site. Water quality is unlikely to be influenced by the NDP Review since the site is already surrounded by residential development and road networks. The impacts on water supply are

considered unlikely as there are no direct hydrological links between the site and Wyre Forest District. Due to the location of the site outside of Wyre Forest District and the fact that the NDP Review process has no powers or influence over the future use of the site, it is considered that no significant effects are envisaged.

Lyppard Grange Ponds SAC

- 6.3 It is considered unlikely that the Draft NDP Review could have a significant effect on the Lyppard Grange Ponds SAC either alone or in combination. Plans in Wyre Forest will have no effect on human disturbance on this site which is already surrounded by development and easily accessed. The NDP Review policies and proposals are unlikely to have any effect on protected species at or around this European site. Water quality is unlikely to be influenced by the NDP Review since the site is already surrounded by residential development and road networks. The impacts on water supply are considered unlikely as there are no direct hydrological links between the site and the District. Due to the location of the site outside of Wyre Forest District and the fact that the NDP Review process has no powers or influence over the future use of the site, it is considered that no significant effects are envisaged.
- 6.4 Due to the scale of growth envisaged within the Draft NDP Review and the fact that the European sites identified are located some distance away, it is considered that no further appropriate assessment work is required for the Draft NDP Review.
- 6.5 In accordance with Habitats Regulations, the Stage 1 of the HRA for the Local Plan also completed an in combination assessment. The Stage 1 screening assessment for the Local Plan determined that the Wyre Forest District Local Plan Review (2016-2036) will not lead to likely significant effects, either alone or in combination, on the qualifying features of the European Sites. None of the other projects and plans identified in Section 8 or Appendix 3 of the Local Plan screening assessment will lead to likely significant effects on the European Sites in combination with the proposals contained in the emerging Local Plan, provided that any mitigation measures identified for other projects and plans are put in place.
- 6.6 The conclusion of the Local Plan screening assessment in relation to in combination effects also applies to the NDP Review as the NDP Review does not propose significant growth in addition to that set out in the Local Plan Review and has been prepared to be in general conformity with the Local Plan Review.
- 6.7 It is therefore recommended that Chaddesley Corbett Review NDP should not be subject to a detailed Habitats Regulations Assessment process. Should the NDP Review document be changed or updated from that which is assessed in this document, then the HRA should be revisited.
- 6.8 Under its 'duty to support', Wyre Forest District Council the HRA Screening Assessment and agreed that, based on the preparation of the most up to date Draft Version of the NDP Review, the NDP did not require a detailed Habitats Assessment Report.

7.0 Consultation

- 7.1 The screening report was subject to a five week consultation with Natural England and other consultation bodies Historic England and Environment Agency.
- 7.2 The responses from the three bodies are set out in Appendix 1. Natural England and Historic England concurred with the outcome of the HRA Screening Assessment, and Environment Agency made no comment.

Appendix 1 Consultation Bodies' Responses to HRA Screening

Natural England

NE Response 370930: Chaddesley Corbett NDP Review

Inbox

SM-NE-Consultations (NE)
20 Oct 2021, 16:44 (17 hours ago)
to lousekirkup@kirkwells.co.uk

For the attention of Ms Louise Kirkup

SEA and HRA Screening of Chaddesley Corbett's Neighbourhood Development Plan REVIEW

Please find attached Natural England's response in relation to the above mentioned consultation.

Kind regards,

Victoria Kirkham
Operations Delivery
Consultations Team
Natural England
Tel: 0300 060 3900

www.gov.uk/natural-england
Consultations@naturalengland.org.uk

Natural England offers two chargeable services - the Discretionary Advice Service, which provides pre-application and post-consent advice on planning/licensing proposals to developers and consultants, and the Pre-submission Screening Service for European Protected Species mitigation licence applications. These services help applicants take appropriate account of environmental considerations at an early stage of project development, reduce uncertainty, the risk of delay and added cost at a later stage, whilst securing good results for the natural environment.

For further information on the Discretionary Advice Service see [here](#)
For further information on the Pre-submission Screening Service see [here](#)

Date: 20 October 2021
Our ref: 370930
Your ref: Chaddesley Corbett NDP Review



Louise Kirkup
Kirkwells

BY EMAIL ONLY
louisekirkup@kirkwells.co.uk

Hornbeam House
Crewe Business Park
Electra Way
Crewe
Cheshire
CW1 6GJ

T 0300 060 3900

Dear Ms Kirkup,

SEA and HRA Screening of Chaddesley Corbett's Neighbourhood Development Plan REVIEW

Thank you for your consultation on the above dated 13th September 2021 which was received by Natural England on the same day.

Natural England is a non-departmental public body. Our statutory purpose is to ensure that the natural environment is conserved, enhanced, and managed for the benefit of present and future generations, thereby contributing to sustainable development.

Strategic Environmental Assessment Screening

We welcome the production of this SEA Screening report. Natural England notes and concurs with the screening outcome i.e. that the 'Plan is unlikely to result in significant negative effects'.

Further guidance on deciding whether the proposals are likely to have significant environmental effects and the requirements for consulting Natural England on SEA are set out in the [National Planning Practice Guidance](#).

Habitats Regulations Assessment Screening

Natural England welcomes the consideration given to the Habitats Regulations. We agree with the conclusion of the report of no likely significant effect upon the named European designated sites:

- Lyppard Grange Ponds Special Area of Conservation (SAC)
- Fens Pools Special Area of Conservation (SAC)

We would be happy to comment further should the need arise but if in the meantime you have any queries please do not hesitate to contact us.

For any new consultations, or to provide further information on this consultation please send your correspondences to consultations@naturalengland.org.uk.

Yours sincerely

Victoria Kirkham
Consultations Team

Environment Agency

Email

RE: Chaddesley Corbett NDP Review - consultation on SEA and HRA Screening reports

Inbox

Irwin, Graeme <graeme.irwin@environment-agency.gov.uk>

19 Oct 2021, 15:49 (18 hours ago)

to Louise

Good afternoon Louise.

I have attached a copy of my response to the first draft of the Chaddesley Corbett NDP review document. I would have no comments to offer on the SEA/HRA Screening Reports.

Kind regards.

Graeme Irwin

Planning Specialist - Sustainable Places (West Midlands Area)

Environment Agency Hafren House, Welshpool Road, Shrewsbury, SY3 8BB

Contact | Mob: 07500 760028 | **Ext:** 020302 51624 | **Int:** 31624 | graeme.irwin@environment-agency.gov.uk

Incident management role: Assistant Flood Warning Duty Officer

Historic England



Ms Louise Kirkup

Direct Dial: 0121 625 6887

Our ref: PL00756210

25 October 2021

Dear Ms Kirkup

CHADDESLEY CORBETT NEIGHBOURHOOD PLAN - SEA AND HRA SCREENING

Thank you for your consultation and the invitation to comment on the SEA and HRA Screening Document for the above Neighbourhood Plan.

For the purposes of consultations on SEA Screening Opinions, Historic England confines its advice to the question, "Is it likely to have a significant effect on the environment?" in respect of our area of concern, cultural heritage.

Our comments are based on the information supplied with the screening request. On the basis of the information supplied and in the context of the criteria set out in Schedule 1 of the Environmental Assessment Regulations [Annex II of the 'SEA' Directive], Historic England concurs with your view that the preparation of a Strategic Environmental Assessment is not currently required.

Regarding HRA Historic England does not disagree with your conclusions but would defer to the opinions of the other statutory consultees.

The views of the other statutory consultation bodies should be taken into account before the overall decision on the need for a SEA is made. If a decision is made to undertake a SEA, please note that Historic England has published guidance on Sustainability Appraisal / Strategic Environmental Assessment and the Historic Environment that is relevant to both local and neighbourhood planning and available at: <https://www.historicengland.org.uk/images-books/publications/sustainability-appraisal-and-strategic-environmental-assessment-advice-note-8/>



THE FOUNDRY 82 GRANVILLE STREET BIRMINGHAM B1 2LH
Telephone 0121 625 6888
HistoricEngland.org.uk



Historic England is subject to both the Freedom of Information Act (2000) and Environmental Information Regulations (2004). Any Information held by the organisation can be requested for release under this legislation.



I trust the above comments will be of help in taking forward the Neighbourhood Plan.

Yours sincerely,

P. Boland.

Peter Boland
Historic Places Advisor
peter.boland@HistoricEngland.org.uk

cc:

Further response, prior to Regulation 14 consultation



Historic England

Ms Yvonne Scriven

Direct Dial: 0121 625 6887

Chaddesley Corbett Parish Council

Our ref: PL00763103

28 February 2022

Dear Ms Scriven

CHADDESLEY CORBETT NEIGHBOURHOOD PLAN REVIEW- SEA AND HRA SCREENING

Thank you for your consultation and the invitation to comment on the SEA and HRA Screening Document for the above Neighbourhood Plan that we understand is under review.

For the purposes of consultations on SEA Screening Opinions, Historic England confines its advice to the question, "Is it likely to have a significant effect on the environment?" in respect of our area of concern, cultural heritage.

Our comments are based on the information supplied with the screening request. On the basis of the information supplied and in the context of the criteria set out in Schedule 1 of the Environmental Assessment Regulations [Annex II of the 'SEA' Directive], Historic England concurs with your view that the preparation of a Strategic Environmental Assessment is not currently required.

Regarding HRA Historic England does not disagree with your conclusions but would defer to the opinions of the other statutory consultees.

The views of the other statutory consultation bodies should be taken into account before the overall decision on the need for a SEA is made. If a decision is made to undertake a SEA, please note that Historic England has published guidance on Sustainability Appraisal / Strategic Environmental Assessment and the Historic Environment that is relevant to both local and neighbourhood planning and available at: <https://www.historicengland.org.uk/images-books/publications/sustainability->



THE FOUNDRY 82 GRANVILLE STREET BIRMINGHAM B1 2LH

Telephone 0121 625 6888
[HistoricEngland.org.uk](https://www.historicengland.org.uk)



Historic England is subject to both the Freedom of Information Act (2000) and Environmental Information Regulations (2004). Any information held by the organisation can be requested for release under this legislation.



[appraisal-and-strategic-environmental-assessment-advice-note-8/>](#)

I trust the above comments will be of help in taking forward the Neighbourhood Plan.

Yours sincerely,

P. Boland.

Peter Boland
Historic Places Advisor
peter.boland@HistoricEngland.org.uk

cc:

Appendix 2

European Site Conservation Objectives for Fen Pools Special Area of Conservation Site Code: UK0030150



With regard to the SAC and the natural habitats and/or species for which the site has been designated (the 'Qualifying Features' listed below), and subject to natural change;

Ensure that the integrity of the site is maintained or restored as appropriate, and ensure that the site contributes to achieving the Favourable Conservation Status of its Qualifying Features, by maintaining or restoring;

- The extent and distribution of the habitats of the qualifying species
- The structure and function of the habitats of the qualifying species
- The supporting processes on which the habitats of the qualifying species rely
- The populations of qualifying species, and,
- The distribution of qualifying species within the site.

This document should be read in conjunction with the accompanying *Supplementary Advice* document, which provides more detailed advice and information to enable the application and achievement of the Objectives set out above.

Qualifying Features:

S1166. *Triturus cristatus*; Great crested newt

Explanatory Notes: European Site Conservation Objectives

These Conservation Objectives are those referred to in the Conservation of Habitats and Species Regulations 2017 as amended from time to time (the "Habitats Regulations"). They must be considered when a competent authority is required to make a 'Habitats Regulations Assessment', including an Appropriate Assessment, under the relevant parts of this legislation.

These Conservation Objectives and the accompanying Supplementary Advice (where available) will also provide a framework to inform the measures needed to conserve or restore the European Site and the prevention of deterioration or significant disturbance of its qualifying features.

These Conservation Objectives are set for each habitat or species of a [Special Area of Conservation \(SAC\)](#). Where the objectives are met, the site will be considered to exhibit a high degree of integrity and to be contributing to achieving Favourable Conservation Status for that species or habitat type at a UK level. The term 'favourable conservation status' is defined in regulation 3 of the Habitats Regulations.

Publication date: 27 November 2018 (version 3). This document updates and replaces an earlier version dated 30 June 2014 to reflect the consolidation of the Habitats Regulations in 2017.

**European Site Conservation Objectives for
Lyppard Grange Ponds Special Area of
Conservation
Site code: UK0030198**



With regard to the SAC and the natural habitats and/or species for which the site has been designated (the 'Qualifying Features' listed below), and subject to natural change;

Ensure that the integrity of the site is maintained or restored as appropriate, and ensure that the site contributes to achieving the Favourable Conservation Status of its Qualifying Features, by maintaining or restoring;

- The extent and distribution of the habitats of qualifying species
- The structure and function of the habitats of qualifying species
- The supporting processes on which the habitats of qualifying species rely
- The populations of qualifying species, and,
- The distribution of qualifying species within the site.

This document should be read in conjunction with the accompanying *Supplementary Advice* document, which provides more detailed advice and information to enable the application and achievement of the Objectives set out above.

Qualifying Features:

S1166. *Triturus cristatus*; Great crested newt

Explanatory Notes: European Site Conservation Objectives

These Conservation Objectives are those referred to in the Conservation of Habitats and Species Regulations 2017 as amended from time to time (the "Habitats Regulations"). They must be considered when a competent authority is required to make a 'Habitats Regulations Assessment', including an Appropriate Assessment, under the relevant parts of this legislation.

These Conservation Objectives and the accompanying Supplementary Advice (where available) will also provide a framework to inform the measures needed to conserve or restore the European Site and the prevention of deterioration or significant disturbance of its qualifying features.

These Conservation Objectives are set for each habitat or species of a [Special Area of Conservation \(SAC\)](#). Where the objectives are met, the site will be considered to exhibit a high degree of integrity and to be contributing to achieving Favourable Conservation Status for that species or habitat type at a UK level. The term 'favourable conservation status' is defined in regulation 3 of the Habitats Regulations.

Publication date: 27 November 2018 (version 3). This document updates and replaces an earlier version dated 30 June 2014 to reflect the consolidation of the Habitats Regulations in 2017.

kirkwells

The Planning People

For more information on the contents of this document contact:

Louise Kirkup

Director

Kirkwells

Lancashire Digital Technology Centre

Bancroft Road

Burnley

Lancashire

BB10 2TP

01282 872570